

Fake Leica

Yibai Idea and Drafts

Mar.2011



徕卡M6J



徕卡M6J

Bases on the M6 body, I design my "Fake Leica" .



徕卡M7限量版“爱马仕”“Veau Swift Etoupe” 序号178/200



徕卡M7限量版“爱马仕”“Veau Swift Etoupe” 序号178/200

Also I reference some bottom from M7.



The back, we use the M9 to show the digital generation.



Reid-III P2724

Keep ↘

Reid III(中文音: 瑞德 III) 相机序号P2724, Taylor&Hobson (泰勒·郝伯森) 50mm 1:2 镜头加皮套。英国制造的瑞德 III是在众多禄卡复制品中唯一青出于蓝而胜于蓝的产品, 禄卡被称为相机中的“奔驰”, 瑞德则被称为“劳斯莱斯”, 可惜瑞德只生产了3000余台相机。泰勒·郝伯森50mm 1:2 镜头在性能上超过了当时的禄卡索尼克50mm 1:2镜头筒抽拉式镜头。



Reid-III P2724



Reid-III P2724



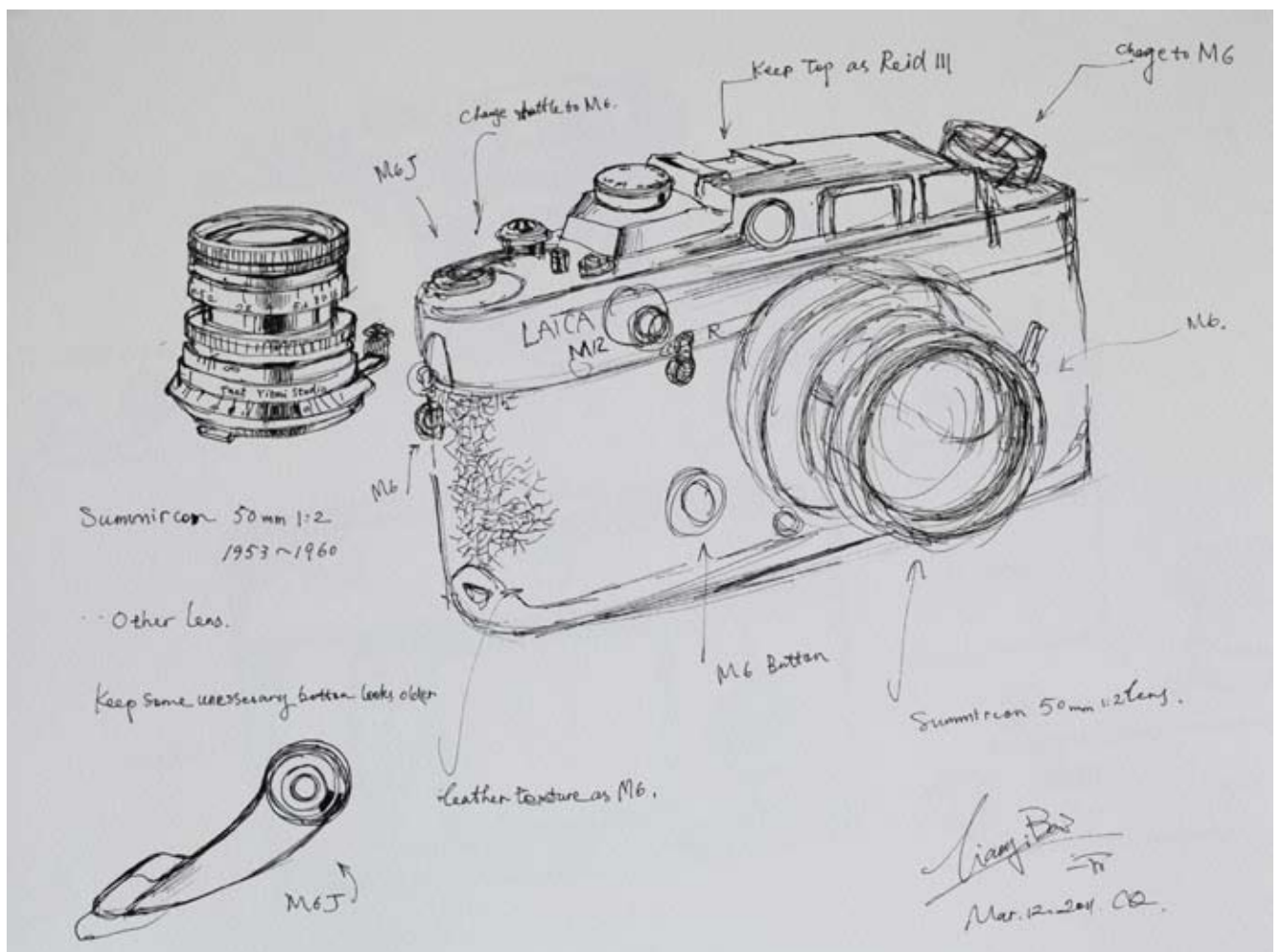
Reid-III P2724

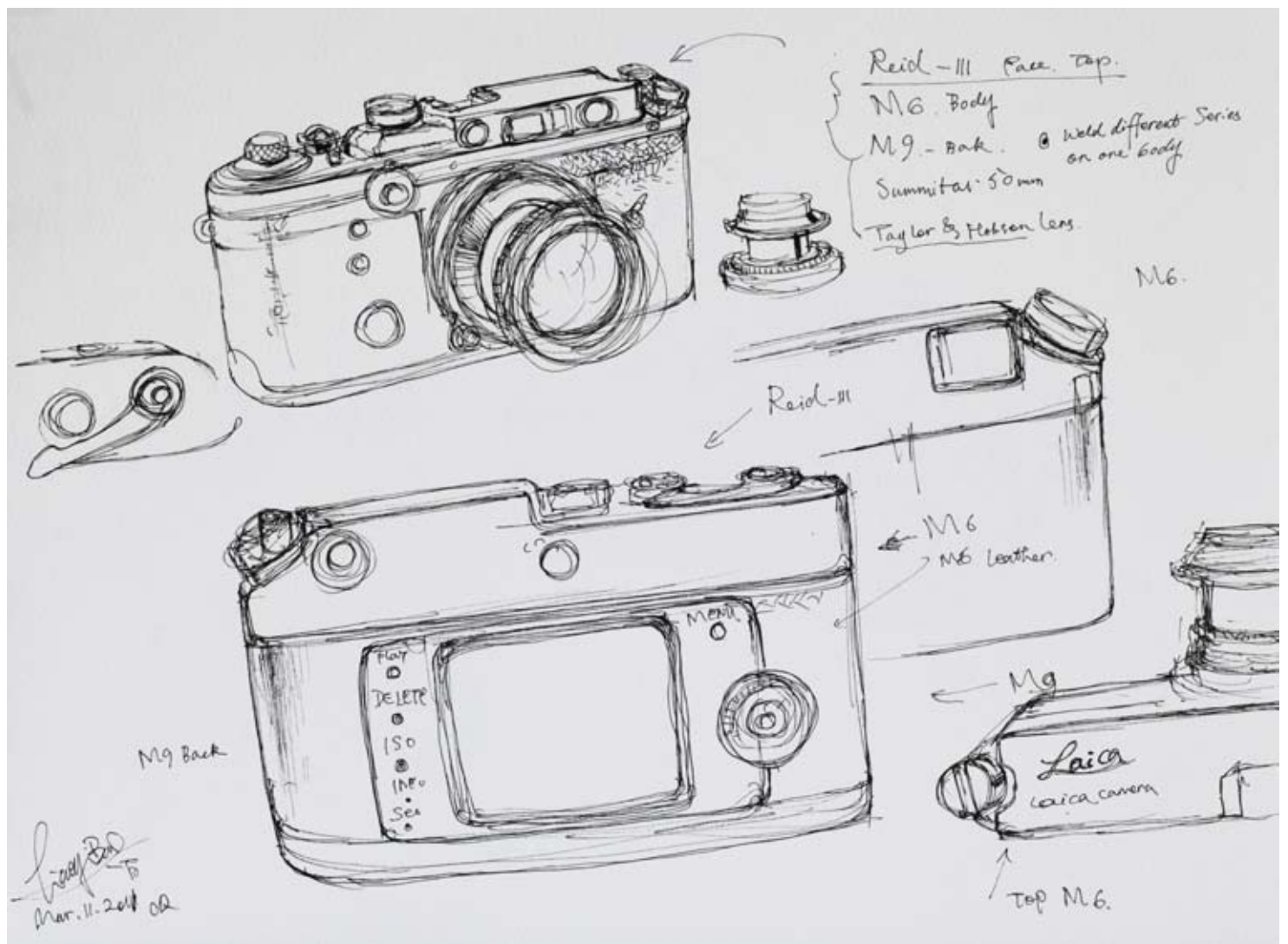
Change the back
weld M9 Digital Monitor.
Mar.11. 2011.

The Reid III old style is so beautiful, so I referenced some bottom from top.



The lens I referenced Summircon 50mm 1:2, 1953-1960 style.





A hybrid Fake Leica was born, it is contained a lot of information that corss different time, different space and different gerenration.

The scale about 3-4 feet, will depends on my feeling when I making the clay model, all works will made by Titanium stainless steel, will keep all detail from real Leica. Thanks. Yibai

Mar.21.2011

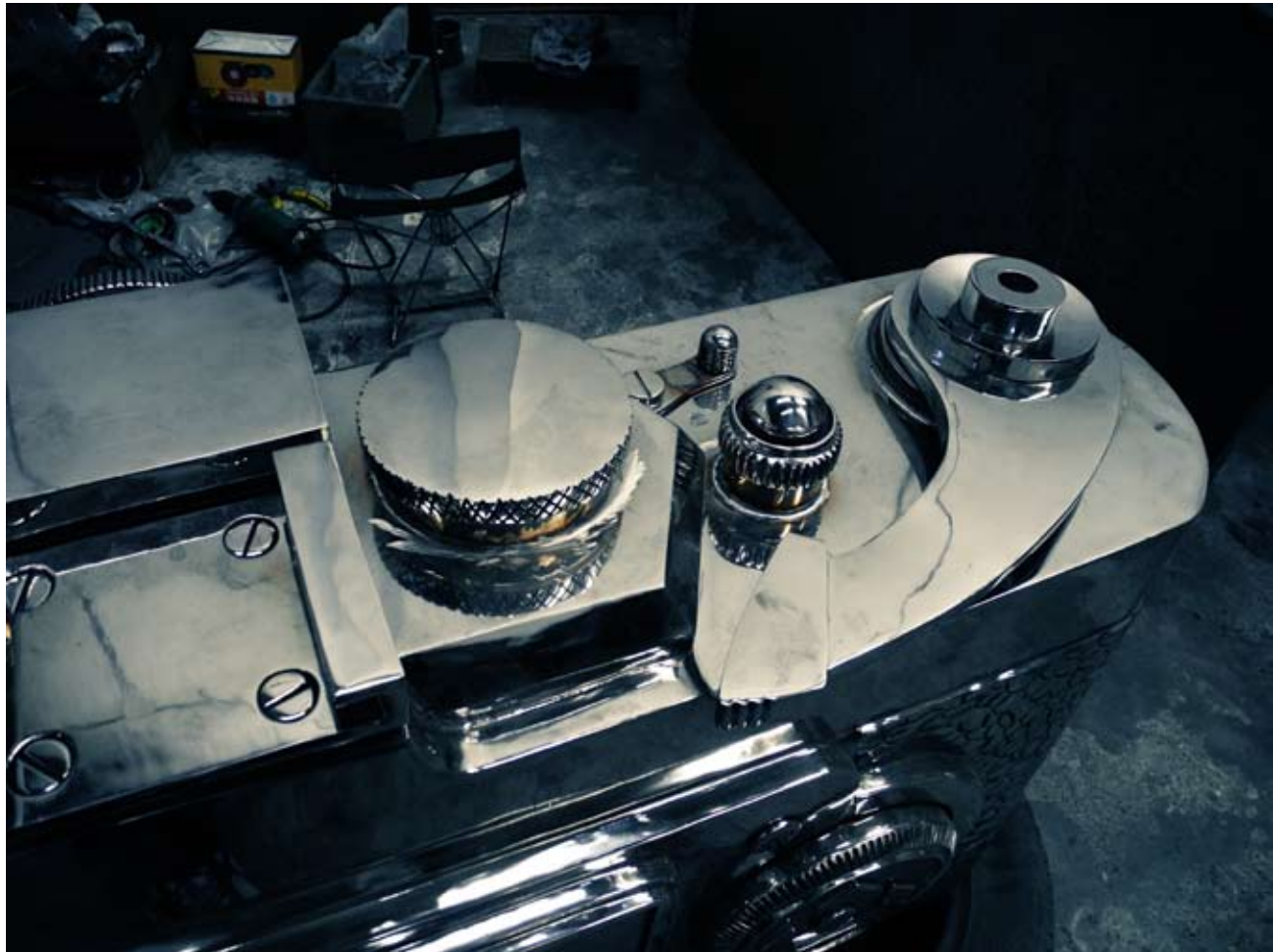
Making A Fake Leica...





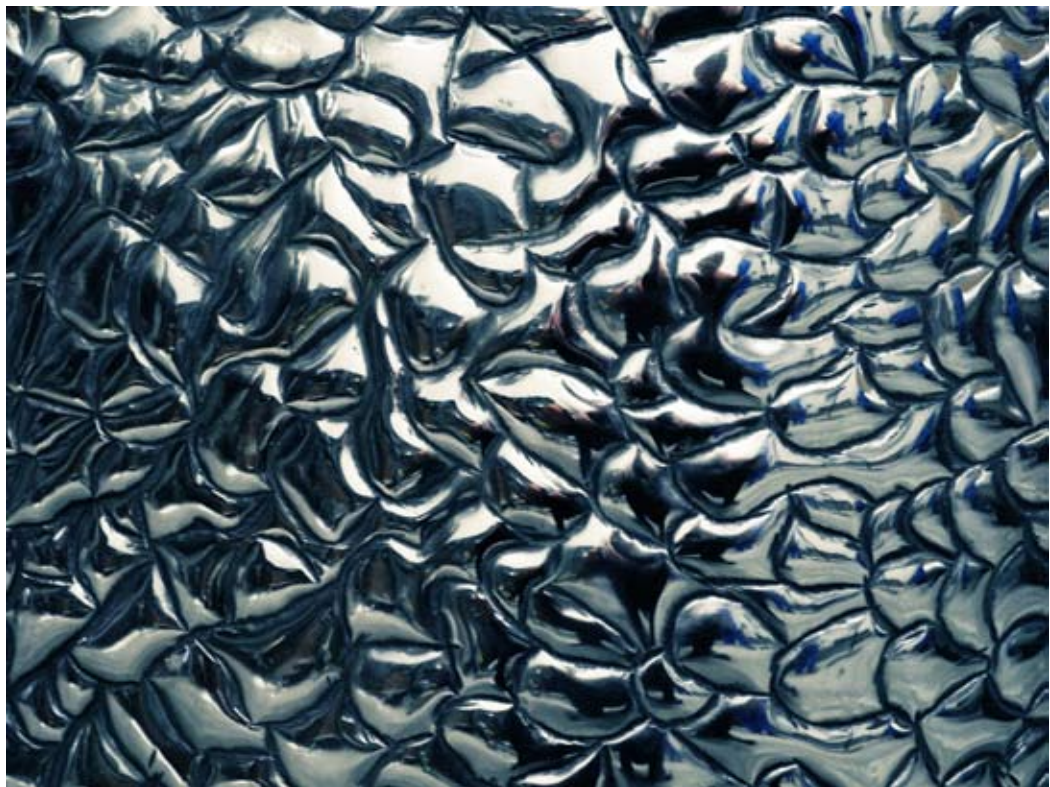














May.27.2011
almost done...